



Year 1-6 Parent Welcome Night

Please collect your Welcome Pack before taking your seat.

Acknowledgement of Country



We respectfully acknowledge the past and present traditional custodians of this land on which we are meeting.

We also acknowledge the contributions of Aboriginal Australians to the education of all children and people in this country we all live in and share together.

The Team so far...



Daniel Bergin
Principal

- Appointed Term 1 2023
- 1.0 FTE



Karen Raulinaitis
Manager Corporate Services

- Appointed Term 3 2023
- 1.0 FTE



Elise Koch
Deputy Principal

- Appointed Term 3 2023
- 0.8 FTE



Kate Charlton
Deputy Principal

- Appointed Term 3 2023
- 0.4 FTE



Recruitment has begun!
We are excited to expand our team with incredible teachers, education assistants and non-teaching staff.

School Facilities & Site Plan



- The school will accommodate 430 students in permanent buildings
- Room to accommodate 12 transportable classrooms and/or an additional teaching blocks taking potential numbers over 700
- Current enrolments sitting at approximately 150 students

Facilities



- ECE and 3 classroom blocks
- Art and Science Room
- 2 playgrounds and we will fundraise for a third
- Shared oval, basketball courts, cricket nets and undercover area

Progress Update



Progress Update



Artwork: "Always Home"

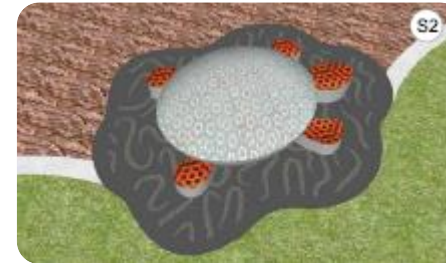
Western Swamp Tortoise: listed as endangered under the Environment Protection and Biodiversity Conservation Act 1999. These tortoises are delightful and captivating, and we should do all we can to ensure their survival.

An important part of the artwork is the patterning within the cast concrete footings. These will be sandblasted into the surface. The patterns are inspired by the diet, the habitats and the local environment of the Western Swamp Tortoise.

In the words of the artist. "Our aim is that the suite of artworks is like a collage of layered information that encourage enquiring minds to think beyond themselves and invite curiosity and an appreciation of the world around them with a goal that they become meaningful and enduring works that are much loved by the children as part of their routine outdoor play."



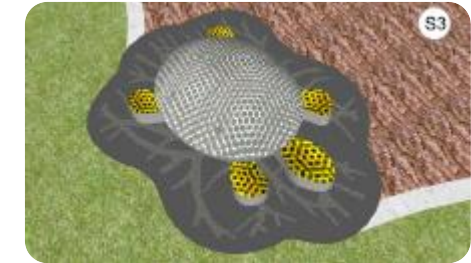
Habitat – water ripples



Diet – 'wriggling' worm



Habitat – reeds and flora



Nesting Habits – root shapes



Leaves and Flora

The 3 Pillars



Excellence in
Teaching and
Learning



Team approach to
Pastoral Care



Community
Connection:
Everyone belongs

Connect • Belong • Thrive •

Today's Session

- General information only
(Classroom specific sessions to be held in early Term 1)
- Answer your questions



Our Vision for HBPS

- 3 key pillars for our school
- Explicit teaching of core skills.
- Opportunities for students to consolidate and deepen these skills through a range of rich learning experiences.
- Support the social, emotional, physical and academic growth of each child



Excellence in
Teaching and
Learning



Team
approach to
Pastoral Care



Community
Connection:
Everyone
belongs

Specialist Subjects

- Visual Art
- Music
- Science
- Physical Education (Sport)
- LOTE

Library



Pastoral Care



- Whole school health and well-being programs to explicitly teach Social and Emotional learning, and Protective Behaviours.
- Holistic case management approach for individual students.
- Early intervention and referral to our School Psychologist, Child Health Nurse, Chaplain and Allied Health Services.
- Whole school intervention programs (where needed) to address gaps in learning.



Community Connection



- Assemblies: linked to our school values and mission.
- Many other events to promote parent and community involvement and celebrate student learning.



2024 Classes...

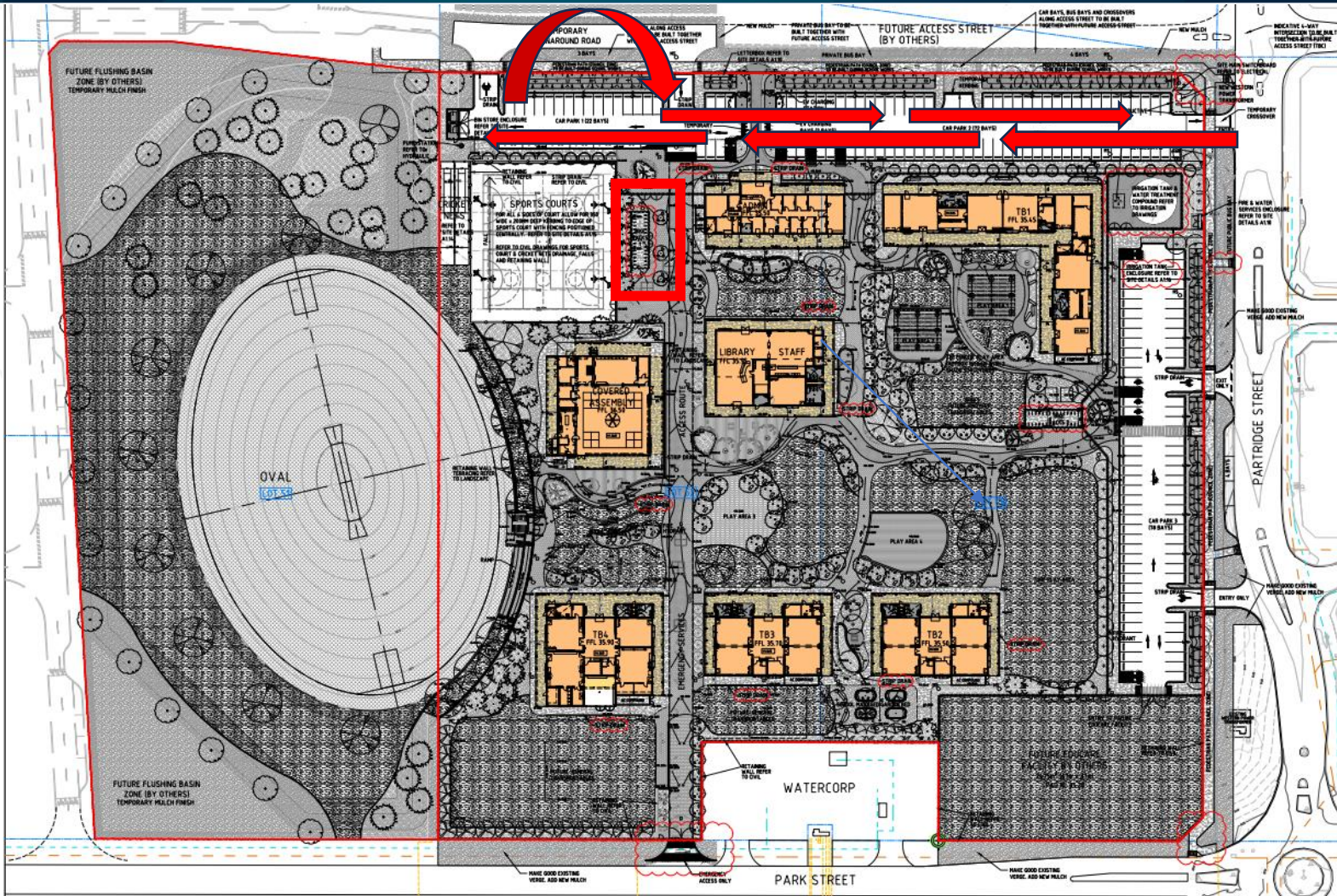


Start and Finish Times

- **Doors Open: 8.15am**
- **Start Time: 8.25am**
- **Finish Time: 2.35pm**
- **Gates open at 8:10 am**



Start and Finish Times



- Kiss and Drive at front of school
- Bikes and Scooters

Out of School Hours Care



- Big Childcare are our chosen provider
- Rob Miller
- Aim to open Day 1
- Enrollment information in your Welcome Pack
- Before School Care: 6.30am - 8.15am
- After School Care: 2.35pm - 6.00pm

big
CHILDCARE

Crunch & Sip and Break Times

Crunch & Sip

- Only fruit and vegetables that crunch.

Break Times

- Longest break will be first.
- Students will play then they will eat.
- Nut Free



Attendance



- Why attending school everyday matters? Every day your child learns something new. Every day they build on what they know. What they learn today is the foundation for what they need to learn tomorrow. That's why attending school every day is so important. The more children attend, the more they learn, the more they achieve. This creates more opportunities for their future.
- If your child will not be at school, please advise us through the compass app or by calling the front office.



Mobile Phones and Smart Watches

- If students choose to bring their phones they must be switched off and placed in their bag. Students bring their mobiles at their own risk.
- All communication between parents and students during school hours should be through school administration.
- Smart watches should be in 'aeroplane mode' so phone calls and messages cannot be sent or received during the school day.



Uniforms



- Nell Gray has been selected as our supplier
- All students are required to wear the school uniform
- See Facebook and Website for purchasing information
- Store located in Inglewood
- Students coming from Brabham PS, who live in our local intake area, will receive \$150 off the cost of uniforms.



Do you have BPS second-hand uniforms to sell? Try:

Brabham Primary School – Parent Community group on Facebook



Uniforms



- School polo
- Navy shorts/skort/pants
- School dress option
- School hats are required
- School jackets are available for cooler months
- Shoes and sandals, not thongs
- Library Bag also available



Factions

- 4 factions, currently named by colour
- Each child has been allocated to a faction, it is listed on the top of your Welcome Pack
- This determines the colour hat you need to buy
- Faction shirts are also available
- For PP-Year 6, we will be encouraging children to wear their faction shirts for Faction Shirt Fridays



Booklist/Stationery & Personal Items



- Champion are our providers
- Instructions are on the booklist
- Free delivery if you order before December 1st
- Booklists are in your Welcome Pack
- Send ALL items at the start of the year
- Please label all items

CAMPION
EDUCATION

School Contributions and Charges



- School Contributions and Charges document is in your Welcome Pack
- \$60 Voluntary Contributions
- Fees can be paid through Champion
- They can also be paid by direct deposit or Eftpos
- Voluntary Contributions are used to provide resources for student learning in a range of learning areas

Contributions & Charges 2024

Students are entitled to participate in an educational program that satisfies the requirements of the Western Australian Curriculum and Assessment Outline. Principals, in consultation with their school board, and in accordance with the School Education Act 1999 and School Education Regulations 2000, determine all contributions and charges requested of parents for the education of their children.

Voluntary Contributions
A voluntary contribution is a payment made by families to the school to cover the cost of materials, services and facilities used by students in their educational program. At Henley Brook PS, the contribution amount is set at \$60 per student. Parents are encouraged to pay the voluntary amount for their children at the beginning of each year directly to the school or via the supplier.

Extra Cost Options
Throughout the year, students have opportunities for a range of extra-curricular activities that enhance their learning experiences. These extra cost options are included on the following page, that these are the maximum costs that we can charge. Where students wish to participate, they will be requested during the school year when costs and participation by students is confirmed.

Payment Options
There are several payment options available to you. We accept EFTPOS, credit card or direct credit. Credit Card Payments can be made through the front office via EFTPOS. Our school's payment system, COMPASS will also have an option to pay via the system straight to the school making it easier for families.

Personal items for student use
The school determines the items to be supplied by families for the student's personal use throughout the year. The resource lists are approved by the School Board (for 2024, by the Consultation Committee) and supplied to parents no later than two months before the start of the school year. As a school, we consider the cost to parents and ensure that we ask for necessary to effectively run our educational programs.

The following page has a breakdown of the voluntary contributions and extra cost options. 100% of the contributions and charges goes directly to the students and is used for the purposes indicated in the tables provided. If money is ever paid for your child's excursion (for example, if an excursion is cancelled, the money will either be paid back to you, or if you prefer, held in a trust for you to access for your child at a later date.

Voluntary Contributions by Learning Area – Total \$60

The Arts	\$5
English	\$10
Mathematics	\$10
HASS	\$10
Science	\$10
ICT	\$5
Physical Education	\$5
LOTE	\$5

2024 Extra Cost Options
The amounts indicated below represent the maximum charge your child may incur for 2024. Your child's year level will determine the activities being provided and the potential costs that you may incur.

Incursions and Excursions	\$200
Swimming Lessons (depending on availability)	\$80
Year 6 Camp	\$600
Year 6 Graduation Event	\$60
Photographs (range of packages available starting from...)	\$30
Interschool Sport (via selection)	\$60
PEAC (via selection and optional)	\$300
School of Instrumental Music (via selection and optional)	\$110

Should you be experiencing financial hardship, or you are simply just finding it tricky to pay for whatever reason, please do not hesitate to make contact and talk things through. Payment plans or deferred payments can always be negotiated and rather than your child missing out, we would prefer to find ways to help. Remember, we are simply a phone call away and here to help!

Kind regards,

Daniel Bergin
PRINCIPAL

Facebook.com/HenleyBrookPS • Park St, Henley Brook WA 6055 • HenleyBrook.PS@education.wa.edu.au

Getting Involved in your Child's Education



- Communication with your child's classroom teacher
- Connecting through the Compass App
- Volunteering
- Read to and with your children
- Involvement in outdoor activities
- Make everyday activities educational



- Parent representative: Kirsten
- We will be looking to establish a P & C in 2024
- The P&C support the school through volunteering and fundraising
- If you would like to join, please keep an eye on our Facebook Page for more information
- Inaugural General Meeting: 4pm Wednesday 1st November 2023



Picnic in the Park



- DATE: 29 November 2023
- TIME: 4.30pm-6.00pm
- VENUE: Livvi's Place Playground, Brabham
- Opportunity to meet the teacher and families in your child's class
- Bring a picnic rug
- Big Childcare providing Sausage Sizzle
- Keep an eye out on your emails and our Facebook Page for more information closer to the date





Questions?



Thank You!